



9, Severnside House, Coleham, Shrewsbury, SY3 7EJ
£575 Per Month



9, Severnside House, Coleham, Shrewsbury, SY3 7EJ

£575 Per Month

VIRTUAL TOUR AVAILABLE - Modern, high spec one bedroom first floor apartment in an attractive, well maintained residential block a short walk from Shrewsbury town centre and Quarry Park.

Available: 14/11/2024

Description

Comprising: Communal Entrance Hall, Hall, Living Room with Kitchen Area including Oven & Hob & Fridge, Utility Cupboard with Washing Machine, Shower Room, Double Bedroom with Built in Wardrobes. EPC C



Unfurnished

Council Tax Band: A

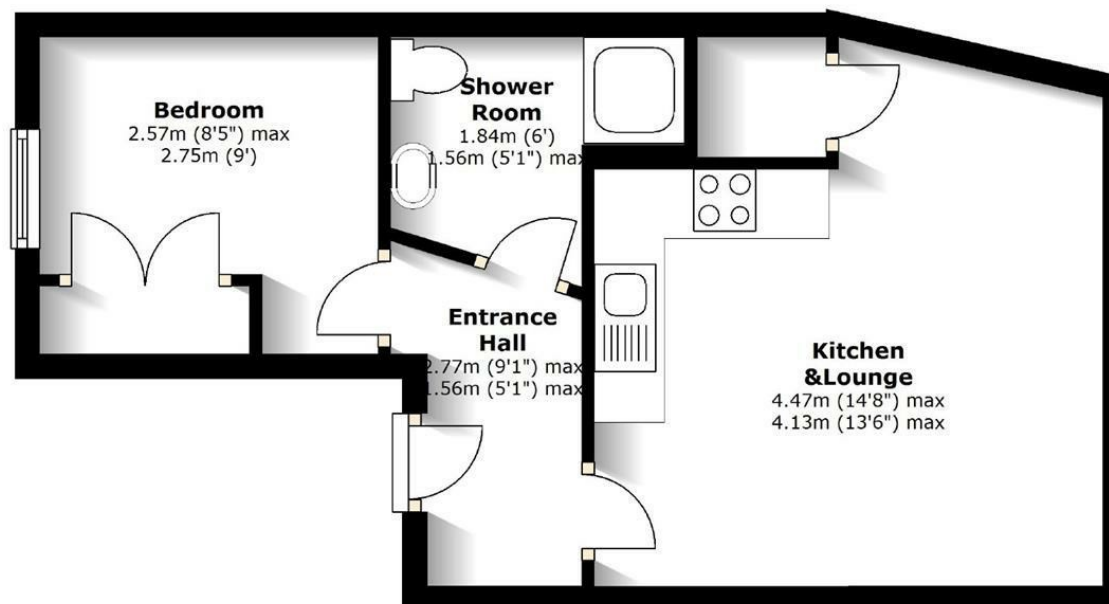
Available: 14th November 2024

EPC: C

Floor Plans

Ground Floor

Approx. 32.3 sq. metres (348.0 sq. feet)



Total area: approx. 32.3 sq. metres (348.0 sq. feet)

We accept no responsibility for any mistake or inaccuracy contained within the floorplan. The floorplan is provided as a guide only and should be taken as an illustration only. The measurements, contents and positioning are approximations only and provided as a guidance tool and not an exact replication of the property.

Plan produced using The Mobile Agent.

These particulars, whilst believed to be accurate are set out as a general outline only for guidance and do not constitute any part of an offer or contract. Intending purchasers should not rely on them as statements of representation of fact, but must satisfy themselves by inspection or otherwise as to their accuracy. No person in this firm's employment has the authority to make or give any representation or warranty in respect of the property.